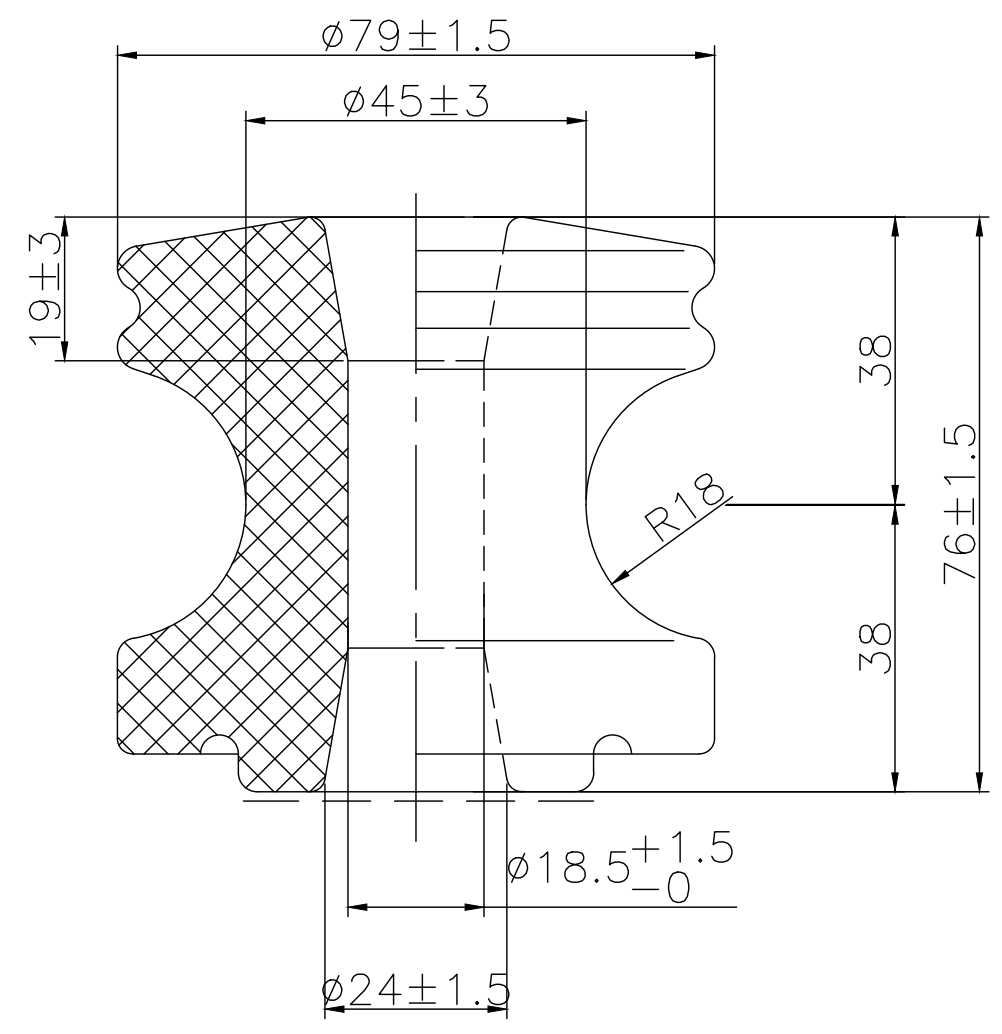




Note: to purchaser all sales of Huaci products are subject to our standard terms and conditions and the limited warranties thereunder.



1. DIMENSIONS VALUES
 - A) DIAMETER (D): 3-1/8IN (79MM)
 - B) HEIGHT (H): 3IN (76MM)
2. MECHANICAL VALUES
 - A) TRANSVERSE STRENGTH: 3,000LB (13.3KN)
3. ELECTRICAL VALUES
 - A) LOW-FREQUENCY DRY FLASHOVER VOLTAGE: 25KV
 - B) LOW-FREQUENCY WET FLASHOVER VOLTAGE, VERTICAL: 12KV
 - C) LOW-FREQUENCY WET FLASHOVER VOLTAGE, HORIZONTAL: 15KV

NOTE:
 1. ALL DIMENSIONS ARE IN MILLIMETERS ACCORDING TO ANSI/NEMA C29.3
 2. ALL THE TECHNICAL AND TESTING ARE IN ACCORDANCE WITH ANSI/NEMA C29.3

Manufacture HUACI Pingxiang Huaci Insulators Group Co., Ltd.			Title Spool Insulators				
Class	IEC: /	Date	Drawing No	Design	Check	Approve	Scale
	ANSI: 53-2	2021/04/08	EP-SP05302	胡志	吴薇	李华	2:1
	GB: /						
Material Porcelain/Ceramic		Weight 0.5kg	Color Brown Glazed	Type No ANSI 53-2		Rev /	