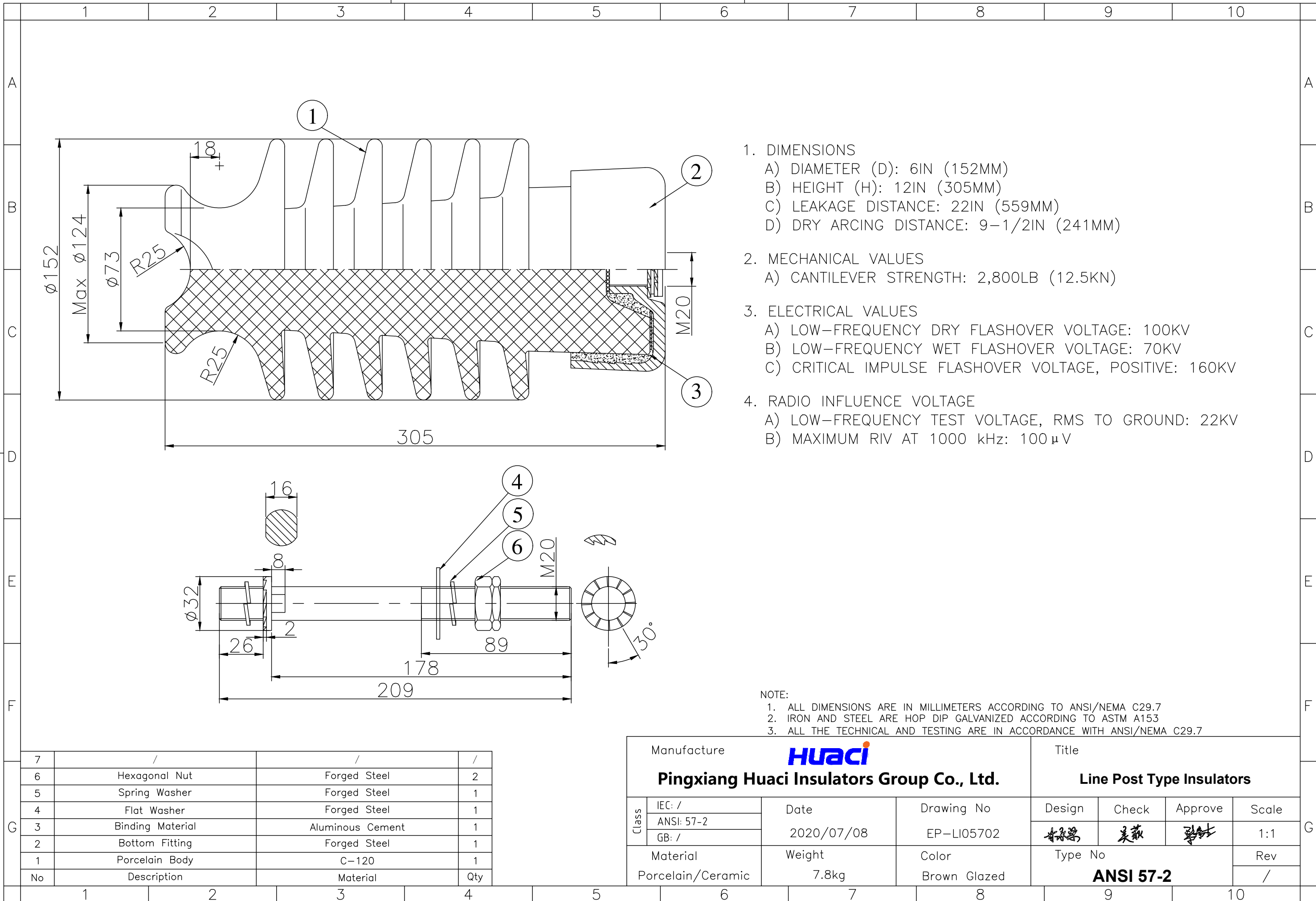


Note: to purchaser all sales of Huaci products are subject to our standard terms and conditions and the limited warranties thereunder.



1. DIMENSIONS
 - A) DIAMETER (D): 6IN (152MM)
 - B) HEIGHT (H): 12IN (305MM)
 - C) LEAKAGE DISTANCE: 22IN (559MM)
 - D) DRY ARCING DISTANCE: 9-1/2IN (241MM)
2. MECHANICAL VALUES
 - A) CANTILEVER STRENGTH: 2,800LB (12.5KN)
3. ELECTRICAL VALUES
 - A) LOW-FREQUENCY DRY FLASHOVER VOLTAGE: 100KV
 - B) LOW-FREQUENCY WET FLASHOVER VOLTAGE: 70KV
 - C) CRITICAL IMPULSE FLASHOVER VOLTAGE, POSITIVE: 160KV
4. RADIO INFLUENCE VOLTAGE
 - A) LOW-FREQUENCY TEST VOLTAGE, RMS TO GROUND: 22KV
 - B) MAXIMUM RIV AT 1000 kHz: 100μV

NOTE:
 1. ALL DIMENSIONS ARE IN MILLIMETERS ACCORDING TO ANSI/NEMA C29.7
 2. IRON AND STEEL ARE HOP DIP GALVANIZED ACCORDING TO ASTM A153
 3. ALL THE TECHNICAL AND TESTING ARE IN ACCORDANCE WITH ANSI/NEMA C29.7

7	/	/	/
6	Hexagonal Nut	Forged Steel	2
5	Spring Washer	Forged Steel	1
4	Flat Washer	Forged Steel	1
3	Binding Material	Aluminous Cement	1
2	Bottom Fitting	Forged Steel	1
1	Porcelain Body	C-120	1
No	Description	Material	Qty

Manufacture HUACI Pingxiang Huaci Insulators Group Co., Ltd.			Title Line Post Type Insulators				
Class	IEC: /	Date	Drawing No	Design	Check	Approve	Scale
	ANSI: 57-2	2020/07/08	EP-LI05702	<i>李永强</i>	<i>吴薇</i>	<i>李永强</i>	1:1
	GB: /						
Material Porcelain/Ceramic		Weight 7.8kg	Color Brown Glazed	Type No ANSI 57-2		Rev /	