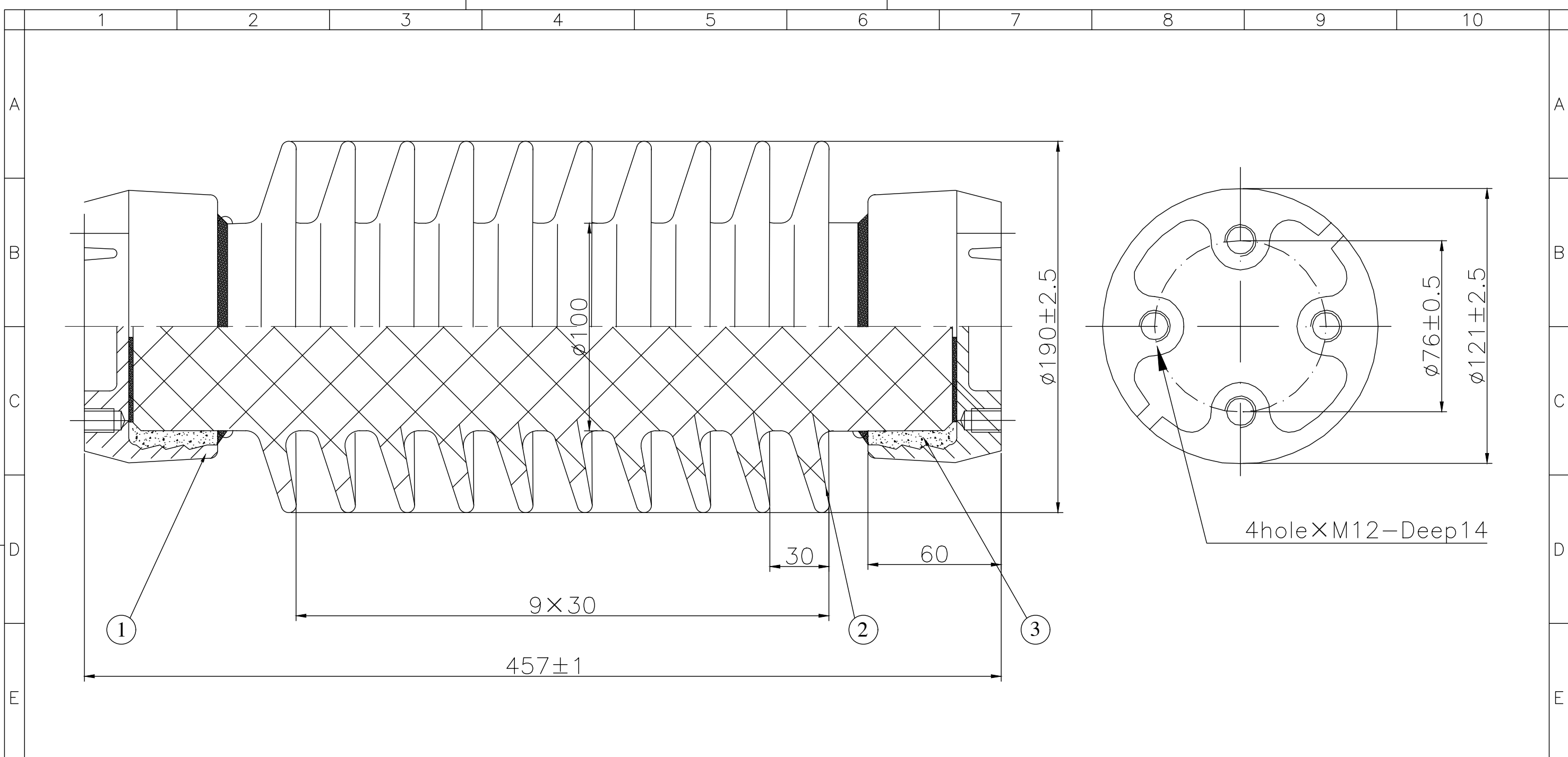


Note: to purchaser all sales of Huaci products are subject to our standard terms and conditions and the limited warranties thereunder.



NOTE:  
 1. ALL DIMENSIONS ARE IN MILLIMETERS ACCORDING TO ANSI/NEMA C29.9  
 2. IRON AND STEEL ARE HOP DIP GALVANIZED ACCORDING TO ASTM A153  
 3. ALL THE TECHNICAL AND TESTING ARE IN ACCORDANCE WITH ANSI/NEMA C29.9

10	Maximum RIV At 1000 Khz: $\mu V$	100
9	Low-Frequency Test Voltage, RMS To Ground: kV	22
8	Compression Strength: kN	66.7
7	Torsion Strength: kN·m	44.5
6	Tension Strength: kN	53.4
5	Cantilever Strength: kN	8.9
4	Critical Impulse Flashover Voltage, Positive: kV	225
3	Impulse Withstand Voltage: kV	200
2	Low-frequency Wet Withstand Voltage: kV	80
1	Leakage Distance: mm	940
No	Description	Value

5	/	/	/	/
4	/	/	/	/
3	Binding Material	Aluminous Cement	525#	/
2	Weathersheds	Porcelain	( $\Phi 190$ )	/
1	Flange Base	Galvanized Steel	As Specified	2
No	Description	Material	Remark	Qty

Manufacture <b>HUACI</b> Pingxiang Huaci Insulators Group Co., Ltd.			Title <b>Post Type Insulators</b>				
Class	IEC: /	Date	Drawing No	Design	Check	Approve	Scale
	ANSI: TR-210	2021/10/08	EP-P002101	胡志	吴敏	李华	1:1
Material	Porcelain/Ceramic	Weight	Color	Type No		Rev	
		15.4kg	Light Grey	<b>TR-210</b>		1	